

The New Standard in Quiet

McQuay GeneSys™ Air-Cooled Screw Compressor Chillers

110 to 475 Tons



McQuay[®]
International

Engineered for flexibility and performance.™

The Sound Solution For Comfortable Cooling

Creating the right environment for comfort means more than merely controlling the temperature. Noise levels also play an important role in overall comfort. To that end, McQuay GeneSys air-cooled screw compressor chillers are the sound solution for your cooling needs.

Exceptionally Quiet Operation

Designed for quiet, efficient operation, McQuay GeneSys chillers are the best choice for sound sensitive environments such as schools, apartment buildings, or anywhere noise levels are a concern. With a single main rotor – two gaterotor design, McQuay GeneSys chillers are inherently quieter than other screw compressor designs and are virtually vibration-free to minimize transmitted sound. Aerodynamically designed fan blades further minimize operating sound.



McQuay GeneSys chillers are quiet enough for installation adjacent to sound-sensitive environments such as schoolyards.

Higher Energy Efficiency Means Lower Cost of Operation

Higher energy efficiency helps you get the most from your energy dollar while helping to conserve precious resources and save money. McQuay GeneSys chillers offer some of the highest EER ratings for both full and part load efficiency, and meet ASHRAE Standard 90.1-1999 for energy efficiency.

Solid State Starters for Reliability You Can Depend On

Built to last, the GeneSys chillers are the only air-cooled chillers to provide solid-state starters as standard equipment. Solid state starters can provide superior electricity monitoring to help protect the unit. These solid-state starters also control acceleration and deceleration to minimize stress and vibration on compressors to help extend their operating expectancy and improve reliability.

Controls Flexibility

Equipped with flexible MicroTech II™ controls, GeneSys chillers allow easy integration with the building automation system (BAS) of your choice. With our Protocol Selectability™ feature you can select BACnet®, LONMARK®, or Modbus®, communications to integrate with your BAS, without the need for costly gateways.

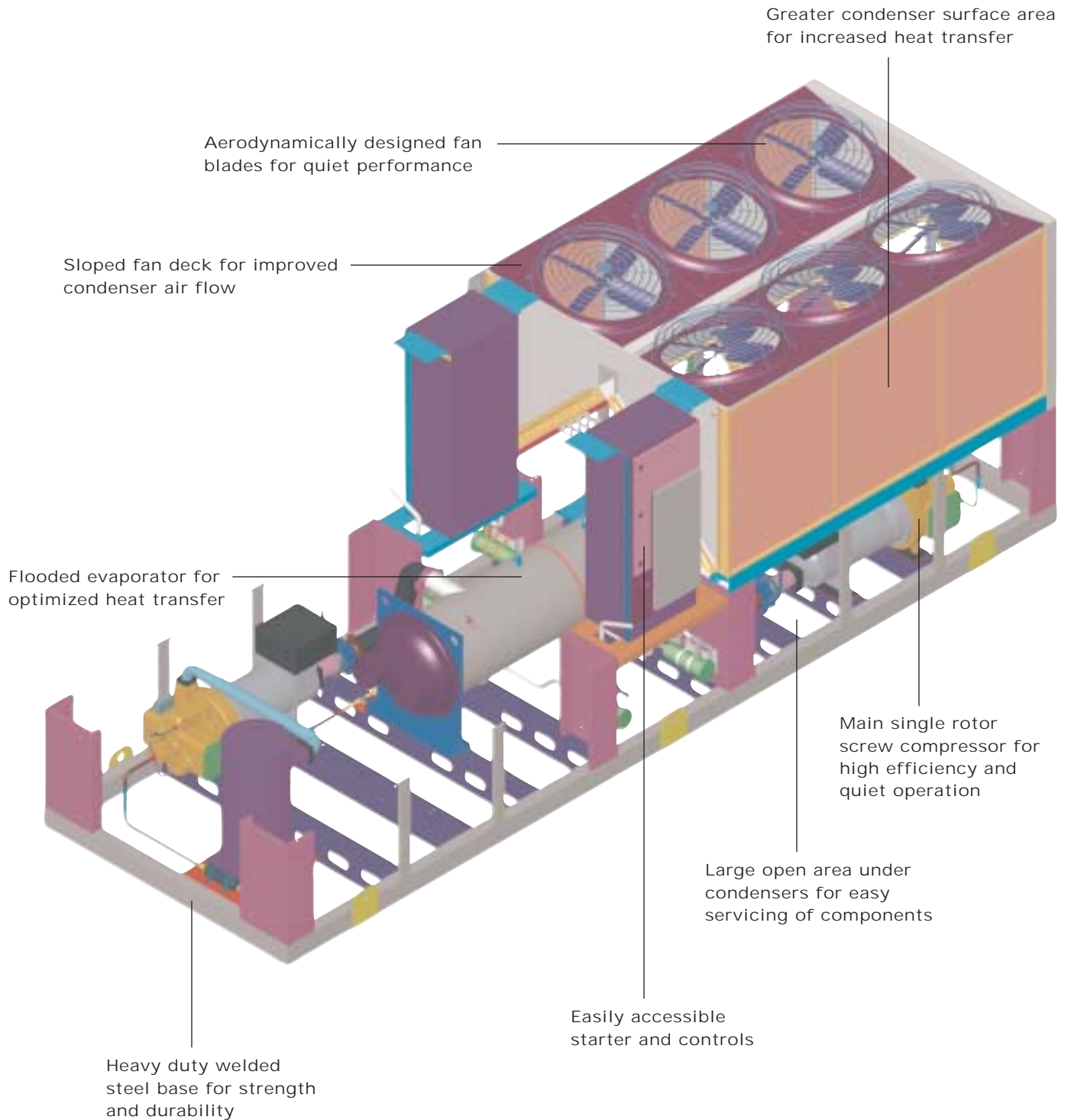
R-134a – the Environmentally Friendly Refrigerant

McQuay GeneSys chillers operate with environmentally friendly R-134a refrigerant. R-134a has no potential to deplete the ozone layer and is considered a long-term solution for your cooling needs.

GeneSys Air-Cooled Screw Compressor Chillers 220 - 475 tons

■ 10.0 to 10.6 EER at full load

■ Up to 14.0 EER at part load IPLV

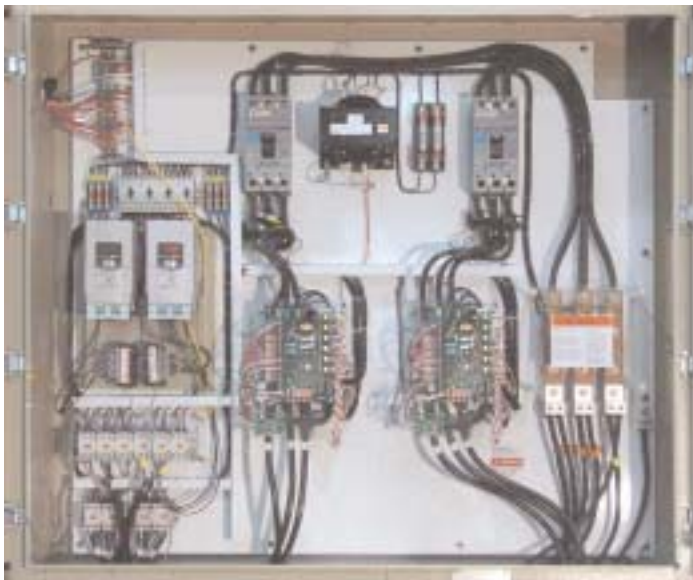


Designed for Quiet Operation, Reliability and Flexibility



Quiet Compressor

- Single main rotor – two gaterotor design is inherently more quiet than other screw compressor designs
- Virtually vibration-free operation to minimize transmitted sound



Reliable Solid State Starter

- Only McQuay provides solid state starter as standard equipment
- Controlled acceleration and deceleration to minimize stress and vibration on compressors
- Superior electrical system monitoring for greater protection from electrical problems

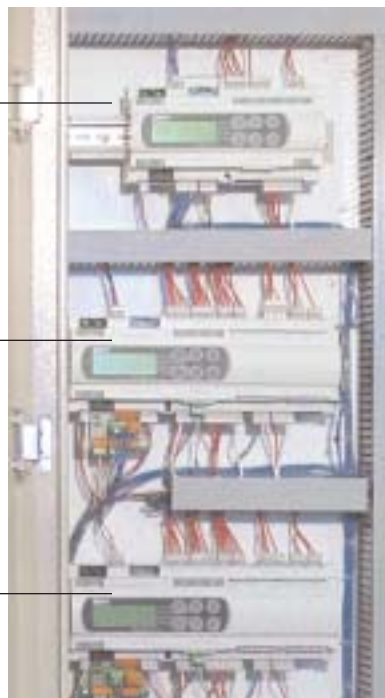
Flexible MicroTech II Controls

- Proactive control logic adjusts to changing operating conditions
- Integrates with BACnet, LonWorks, or Modbus communication networks
- Supports your choice of building automation system vendors
- Separate controllers for each refrigerant circuit for greater reliability and redundancy

System Controller

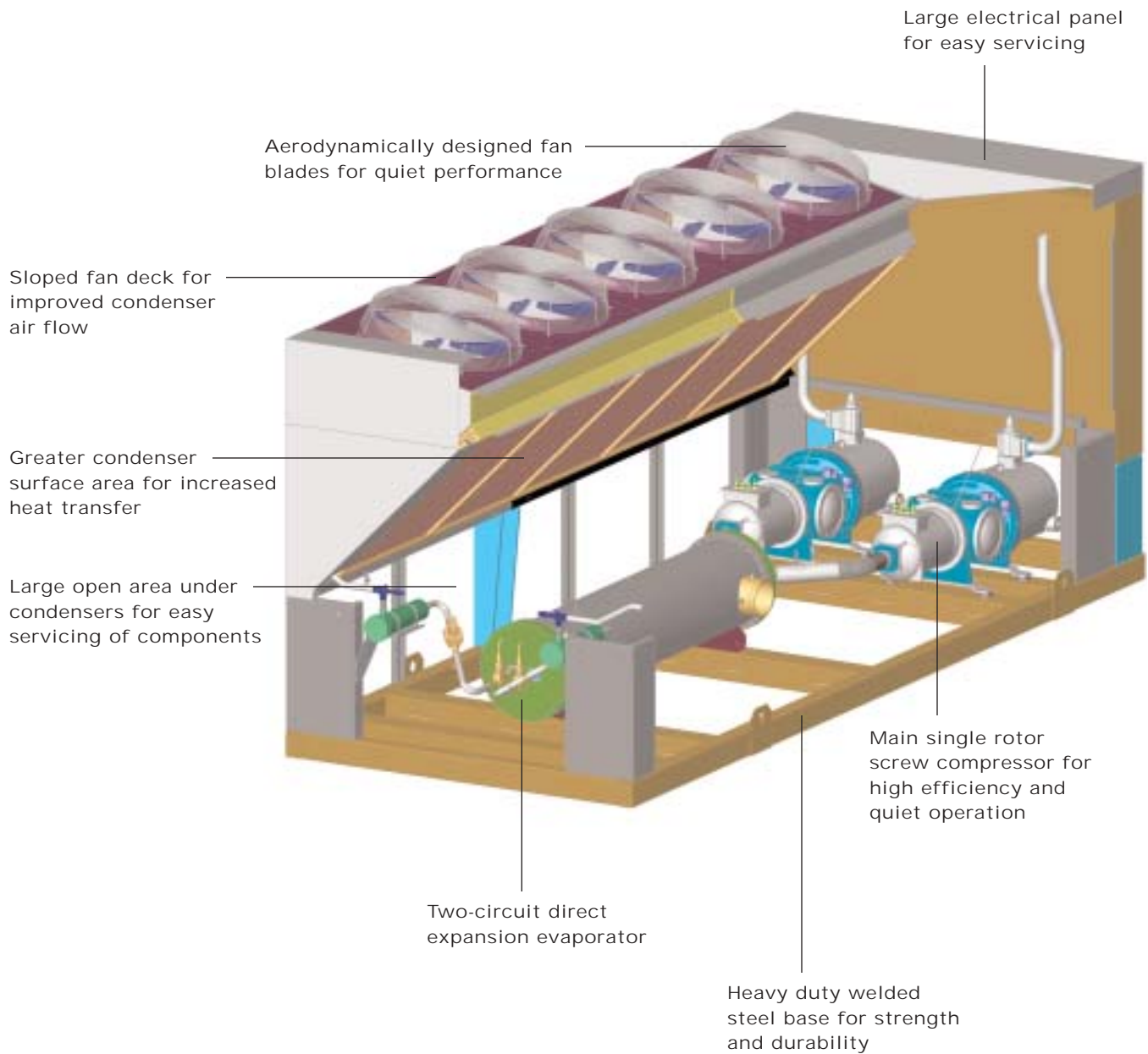
Circuit #1 Controller

Circuit #2 Controller



GeneSys Air-Cooled Screw Compressor Chillers 110 - 210 tons

- **Ultra quiet: sound pressure at 30 ft. is as low as 67 dBA per ARI Standard 370**
- **Standard models full load efficiency: 9.6 to 10.0 EER**
- **High efficiency models full load efficiency: 10.3 to 10.6 EER**



McQuay GeneSys™ Air-Cooled Screw Compressor Chillers

Quiet Operation

- Aerodynamically designed fan blades and low speed motors reduce operating sound levels
- Single main rotor – two gaterotor screw compressor is inherently quieter than dual rotor designs

Reliability

- Solid state starters for smooth acceleration and deceleration
- Dynamic controls sense unusual operating conditions and automatically adjust for appropriate and continued operation
- Full factory run testing to optimize trouble-free start-up and operation

Application Flexibility

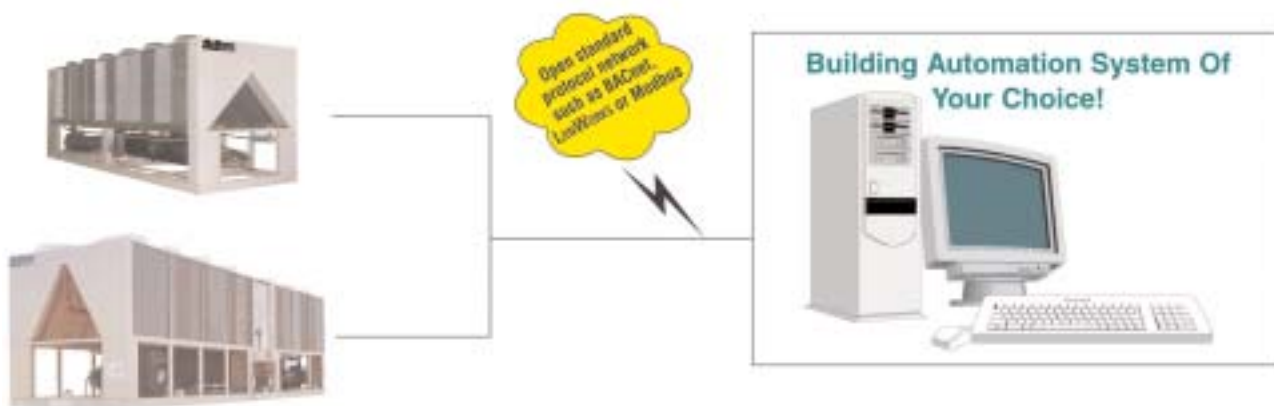
- Small unit footprint reduces the space required for installation
- Optional low and high ambient kits extend chiller operating range
- Special condenser coatings withstand demanding seacoast environments

Efficiency

- All models exceed ASHRAE Standard 90.1-1999 efficiency standards
- Standard and high efficiency models available in 110 to 210-ton size range

Easy to Integrate Controls

- MicroTech II controls with our Protocol Selectability feature allow easy integration with most building automation systems
- Supports a choice of BACnet, LonWorks or Modbus network communications



McQuay International delivers engineered, flexible solutions for commercial, industrial and institutional HVAC requirements with reliable products, knowledgeable applications expertise and responsive support. McQuay products and services are available through a worldwide network of dedicated sales and service offices.